

16E1+4Fast Ethernet Manageable Fiber Multiplexer

Model: AZ-OP-16E1-4ETH-M/DF



Functions:

AZ-OP-16E1-4ETH-M/DF is the 16E1 point-to-point optical transport equipment that uses the FPGA chips and it is easy to upgrade. It is single board structure and the largest transmission capacity is 16E1 and 4*100M line Ethernet data, one channel RS232. The Ethernet bandwidth is set on base on multiple of 32K. The outer design use the standard 19 inches rack, so the volume is small, weight is light and operation is convenient and credit.

The fiber multiplexer support GUI management via console port, the user can monitor and set the device easily.

PRODUCT CHARACTERISTIC:

- ◆ Line bit rate is 150Mb/s, 50Km transmission without repeater
- ◆ 1+1 line protection with ALS facility for eye safety
- ◆ Provides 16 E1s comply with ITU-T G.703 on interface and G.742, G.823 on jitter performance; Local/Remote loopback is supported
- ◆ Provides a 100Mb/s fast Ethernet interface complies with IEEE 802.3u 100BASE-TX, supports auto-negotiation and flow control (pause)
- ◆ The device support VLAN trunk and access mode
- ◆ Alarms, performance monitor, and information about the local/remote equipment status are available
- ◆ Provides Engineering Order Wire (EOW), optional
- ◆ customer RS232 data channel and RS232 interface (NMS) for management, optional
- ◆ Both AC 220 or DC-48 are available or double power AC+DC (optional)
- ◆ Single board design, 1U high, and 19 Inch wide



E1 interface:

Bit rate: 2.048Mb/s,±50ppm

Impedance: 75Ω unbalanced or 120Ω balanced RJ48 wire sequence: 1 and 2 are transmitting lines, 4 and 5 are receiving lines

Coding: HDB3, according to ITU-T G.703

Jitter: complies with ITU-T G.823 and G.742.

10/100/1000 Base-T Port:

Fiber interface:

□ Bit rate: 150Mb/s ± 50ppm

□ Wave length: 1310nm (1550nm optional)

□ Fiber: Single mode

□ Output power: -2 to -11dBm

□ Sensitivity: Better than -36dBm

□ Connector: FC (SC is optional, and SC for ALS)

Power supply:

working voltage range wide, good

anti-disturb and Isolation, work stable

Option I – DC-48V, range DC-36V~DC-72C

Option II – AC220V, range AC165V~AC240V

Environment condition:

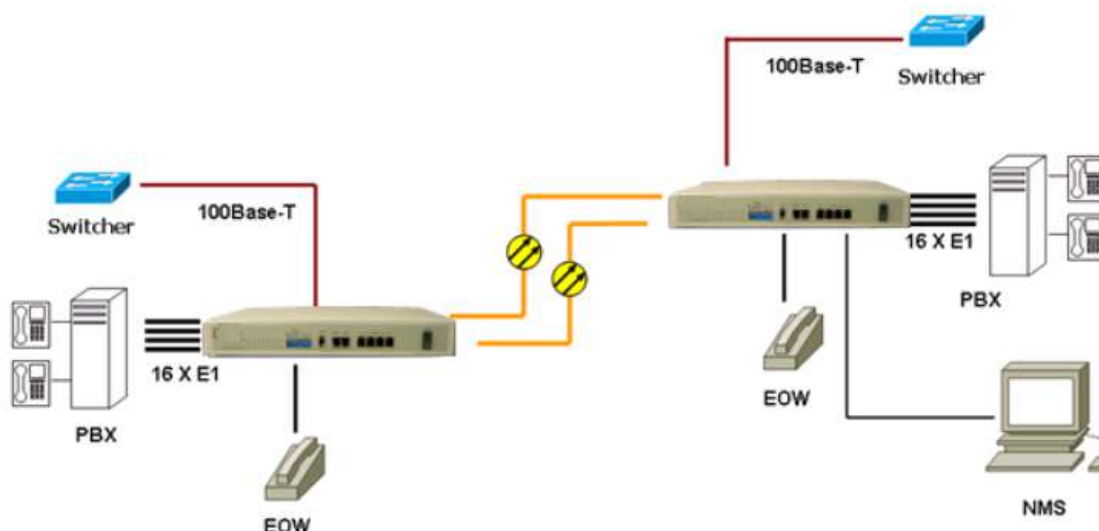
Working temperature: -10°C ~ 50°C

Working Humidity: 5%~95 % (no condensation)

Storage temperature: -40°C ~ 80°C

Storage Humidity: 5%~95 % (no condensation)

APPLICATION:





Order Information:

AZ-OP-16E1-M/DF	16E1 fiber multiplexer, E1 750ohm or 120ohm, two fiber (1+1protection),Fixed optical port, dual fiber or single fiber, power AC220V or DC48V,GUI management
AZ-OP-16E1-4ETH-M/DF	16E1 fiber multiplexer,4*10/100M Ethernet,E1 750ohm or 120ohm, , two fiber (1+1protection),Fixed optical port, two fiber (1+1protection), dual fiber or single fiber, power AC220V or DC48V, GUI management
AZ-OP-16E1-4ETH-M/DF/AD	16E1 fiber multiplexer,4*10/100M Ethernet,E1 750ohm or 120ohm, two fiber (1+1protection),Fixed optical port, two fiber (1+1protection), dual fiber or single fiber, two power AC220V+DC48V, GUI management